



HAWORTH

Nia Overview

EMEA
2024

Content

Value proposition

Statement of line and Features

Functions

Colours and materials

Applications

Value proposition

HAWORTH

World of work is constantly changing

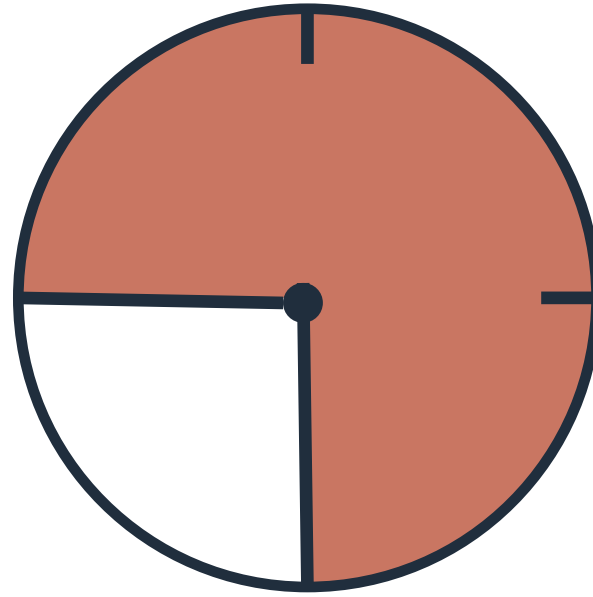
Office spaces have become more and more versatile to accommodate different tasks and behaviours of changing workforces.

Flexible working practices have increased the number and variety of non-assigned workspaces and added complexity to workspace design.

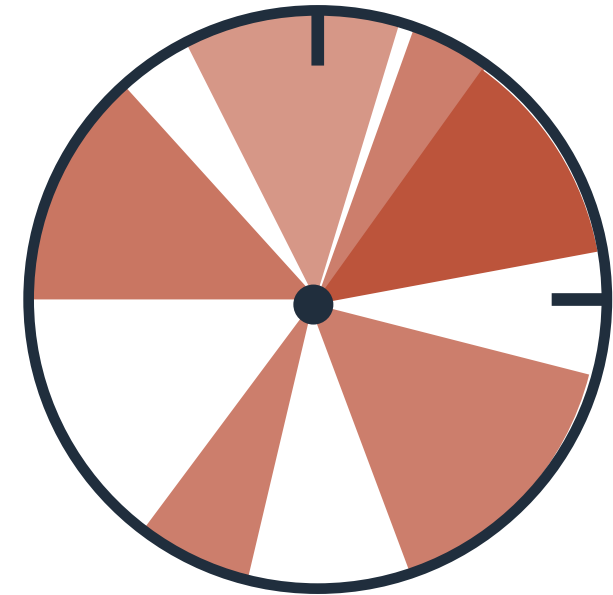


Traditional vs Agile work

Agile workers don't want to spend time adjusting the task chair they only spend a few hours in. The ideal work environment for tomorrow's knowledge worker provides support where it's needed and freedom where it's wanted.

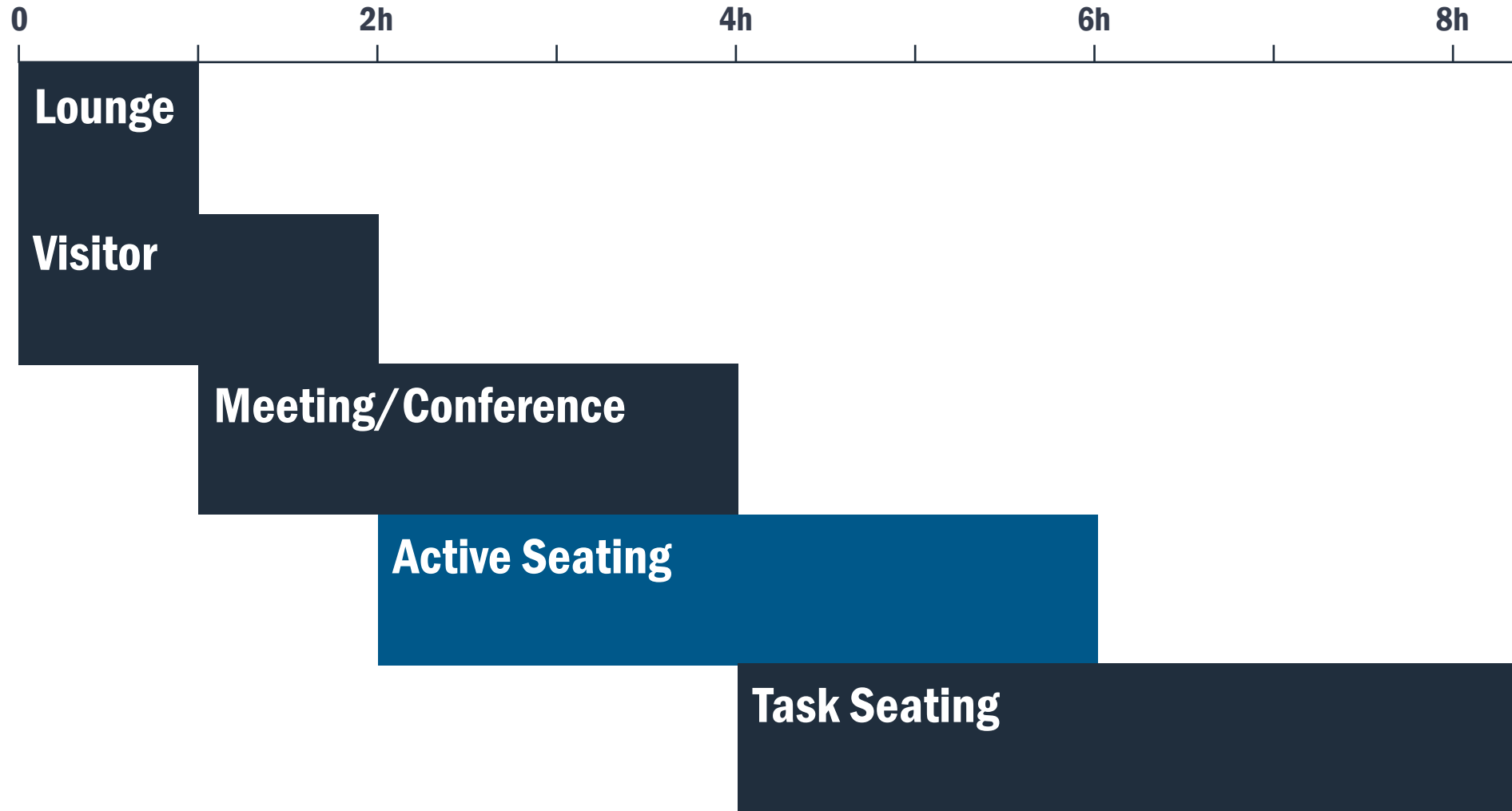


9 h Focus work
at assigned
workplace



2h meeting
1,5 h conference call
20 min conversation
over coffee
1,5 h silent focus work
2h workshop

Why Active Seating?



Why Nia?

Nia was conceived with the needs of an increasingly agile global workforce in mind:

Redefining work seating

Traditional task chairs contrast the increasingly residential-themed workplace aesthetic. Nia with its slim upholstered profile and concealed mechanisms finally create a chair that compliments this aesthetic without compromising performance

Freedom as wanted, support as needed

Nia's weight-activated mechanism and unique pivoting back accommodate and quickly adapt to users postures without complicated adjustment controls.

So many opportunities

Nia is designed to blend the style and comfort of lounge chair with the performance of a task chair, creating a solution for many different work settings, from meeting/conference rooms, focus work areas and collaboration zones.

NIA



Statement of line and Features

HAWORTH

Nia Statement of Line

As diverse as its users,
designed for every workstyle
and every possible application
in the workplace.



High back
700 mm



Mid back
600 mm



Stool
600 mm



Statement of Line

Task chair

Arms

Armless
Fixed (+)
Height adjustable Arms (+)

Mechanism

Weight activated mechanism
Seat height adjustment
Backrest fixation

Castors

Hard castors
Soft castors



Upholstered Back

High back (+) – 700mm
Mid back – 600mm

Backrest Mechanism

Without
With (+)

Seat pan

Comfort foam
Fire retardant

Base

Aluminium
Plastic*

(+) optional

* Available soon

Statement of Line Stool

Arms

Armless
Fixed (+)
Height adjustable Arms (+)

Mechanism

Weight activated mechanism
Seat height adjustment
Backrest fixation

Footring:

Alu polished

Trim/cylinder:

black



Upholstered Back

Mid back – 600mm

Backrest Mechanism

Without
With (+) **

Seat pan

Comfort foam
Fire retardant

Base

Aluminium
Plastic*

Casters + Glides:

Glides black
Self broken castors for
stools (EU norm)

(+) optional

*Available soon

** available only with arms

Statement of Line

Height adjustable arms



(+) optional

HAWORTH

Key features

- Simple, intuitive adjustment
- Smart, unique patented mechanism
- Supports a wide variety of postures
- Designed by brodbeck design and Haworth Design Studio



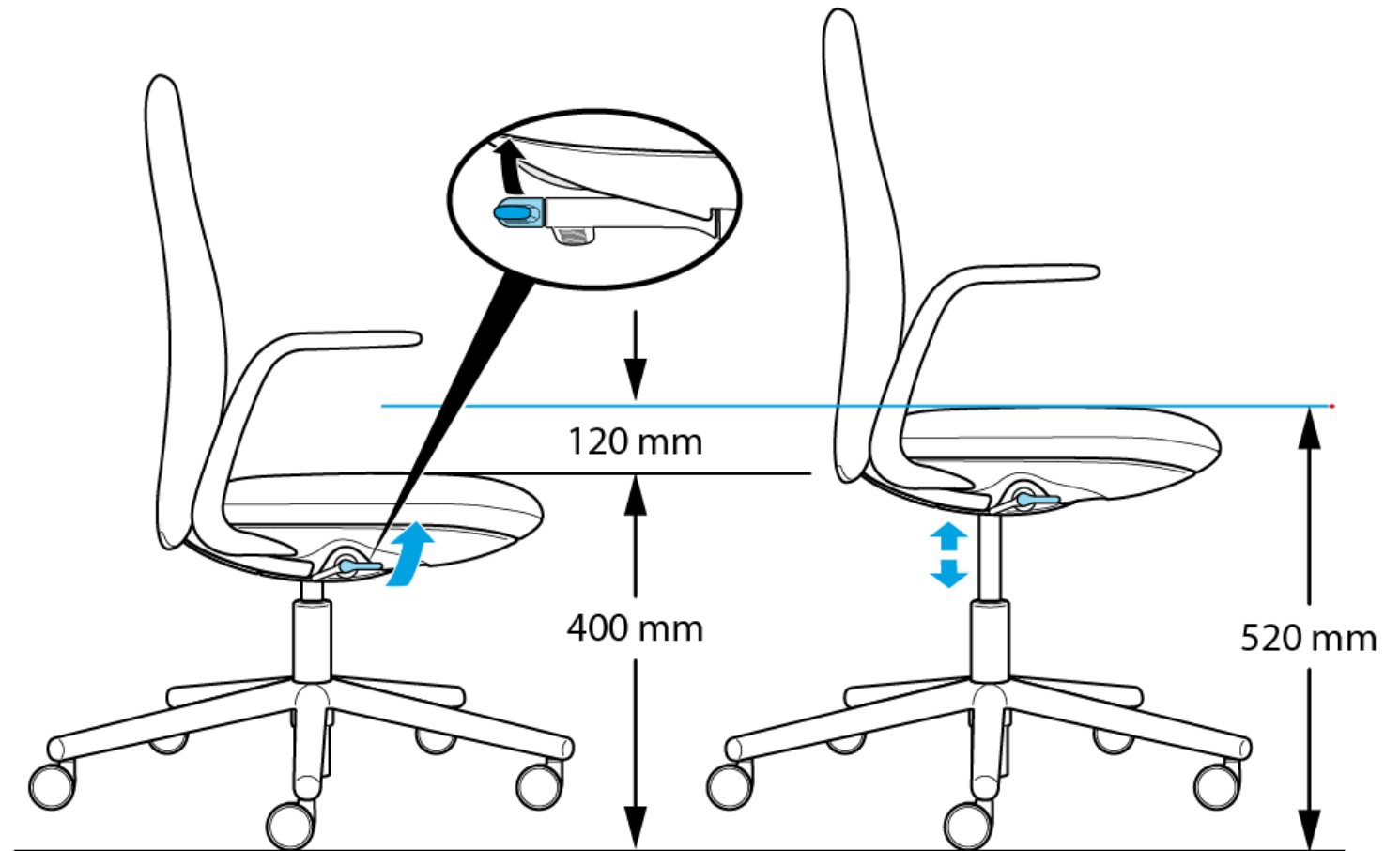
Functions

Seat height adjustment

Pneumatic seat height adjustment.

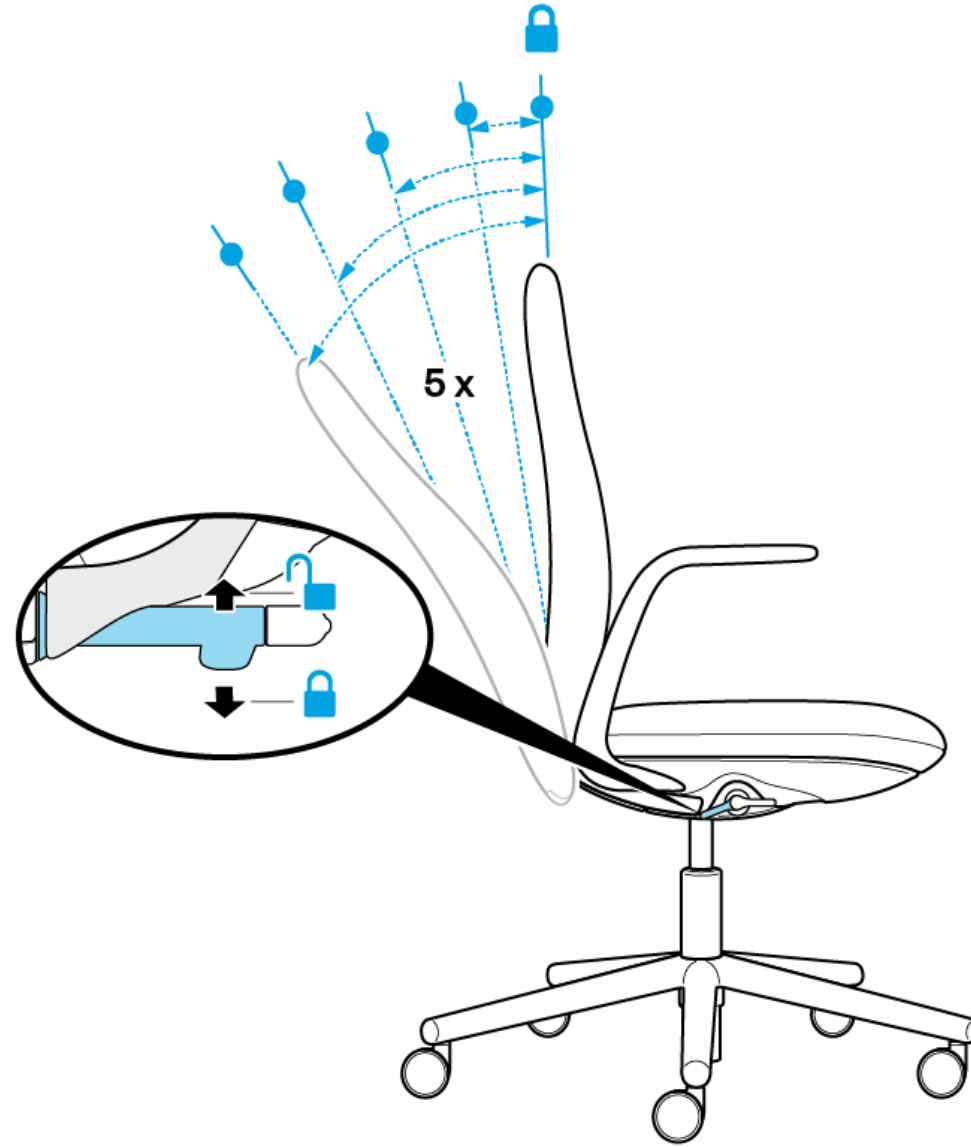
Seat height adjusts 120 mm from 400 mm to 520 mm on standard models

Seat height adjusts 220 mm from 580 mm to 800 mm on stools.



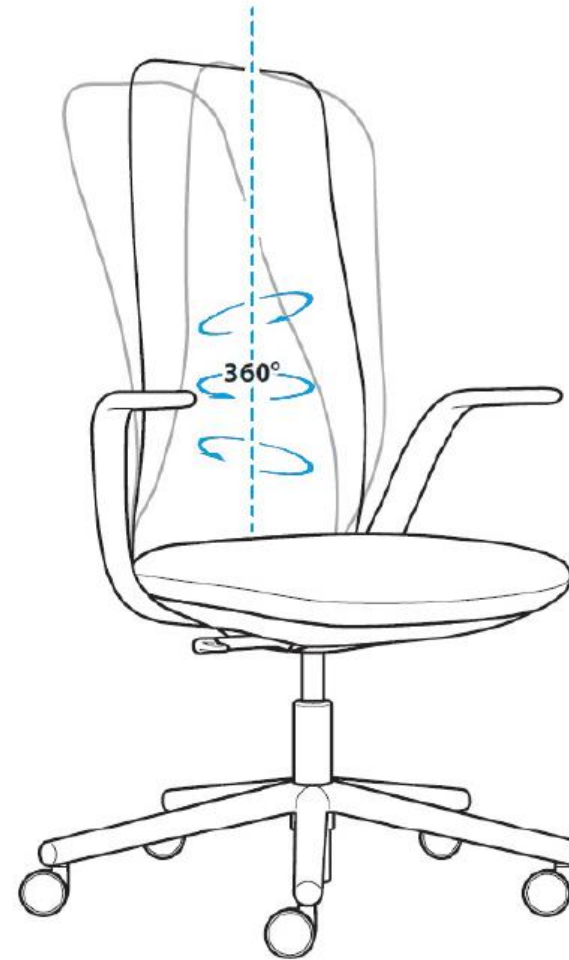
Back lock

Single position back lock to fix the backrest in the upright position. In total there are 5 back rest positions to fix.



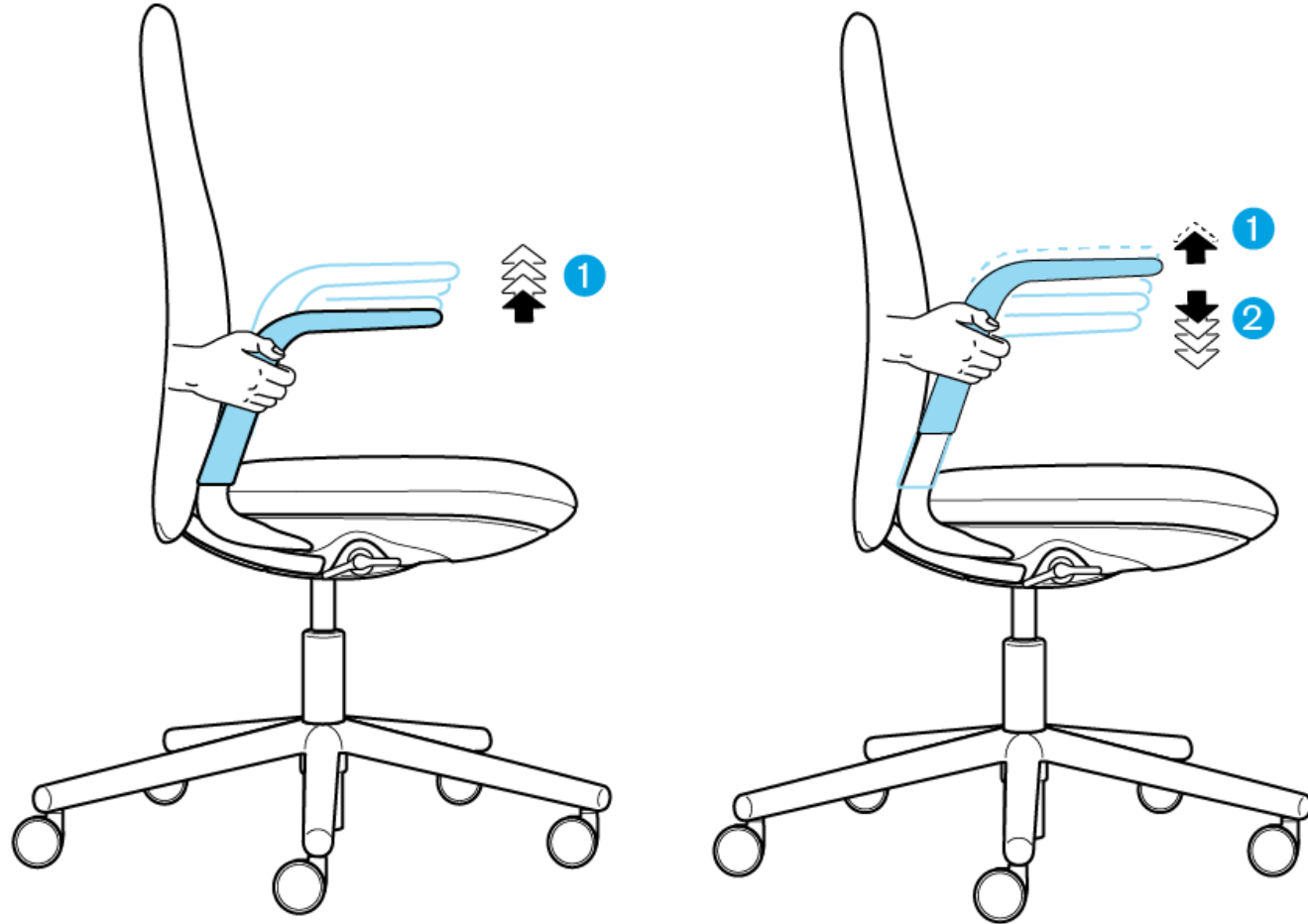
Pivoting Mechanism (Optional)

Pivoting mechanism is self adjusting and moves in combination with the seating mechanism to create 360° movement.



Height Adjustable arms (Optional)

Height-adjustable armrests support the musculature of the neck and shoulders when it's set properly. Grasp the armrest and slide the armrest up or down as needed.

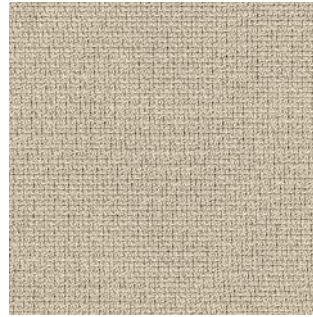


Colours and materials

Colours & Materials Seat & Back upholstery



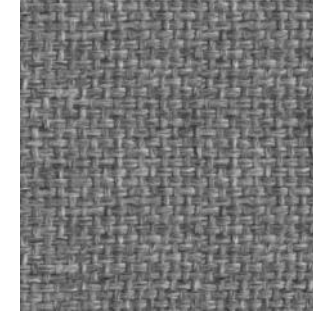
Felicity (Coll. 34)



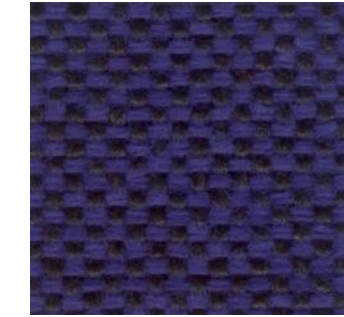
Convert (Coll. 50)



Xtreme (Coll. 82)



King L Kat (Coll. 63)



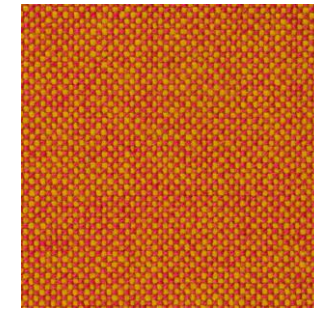
Maya (Coll. 66)



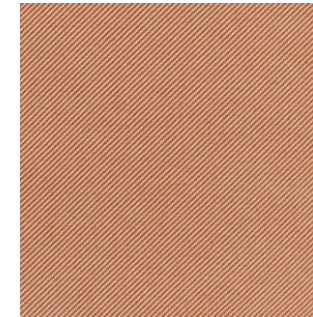
Diagonale



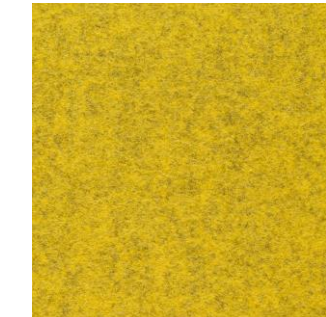
Blazer (Coll. 61)



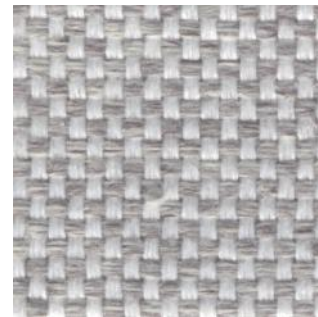
Hallingdall 65



Relate



Oceanic



Class (Coll. 68)



Steelcut Trio
(Coll. 58)



Atlas



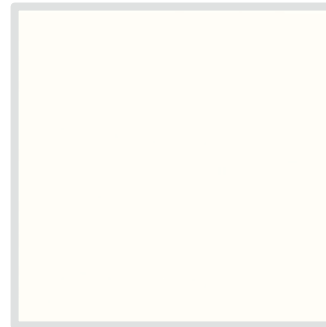
Divina Melange

Colours & Materials Finishes

Plastic parts



Black

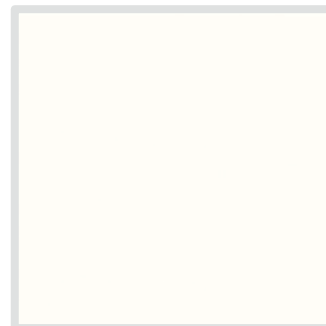


Smooth Plaster

Base Finishes



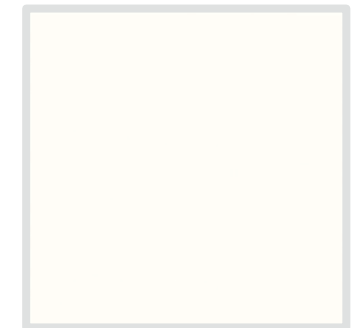
Aluminum
Structured Black



Aluminum
Structured White



Plastic Black*



Plastic White*

*Available soon

Applications

HAWORTH

Workshop



HAWORTH

**Focus Work
unassigned**



HAWORTH

**Focus work
assigned**



HAWORTH

Meeting



HAWORTH

Meeting



HAWORTH

Home Office



HAWORTH

Thanks