

HAWORTH

WORKSTATIONS INSPIRATION LAYOUTS

Haworth Application Design Team - 2024



INDEX

PRICE

- \$ (\$15 - \$30k)..... SIF's -
- \$\$ (\$30k - \$45k)..... SIF's -
- \$\$\$ (\$45k & above)..... SIF's -

LAYOUT TYPE

- Benching..... SIF's -
- Panel Based..... SIF's -
- Storage Based..... SIF's -

Overall typical price does not include task seating, systems power, ancillary, or architectural interiors. Architectural interiors product shown is used for rendering purposes only. Validate before order entry.

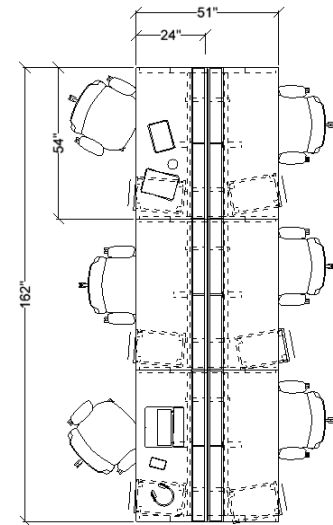


WORKSTATIONS | Benching - \$

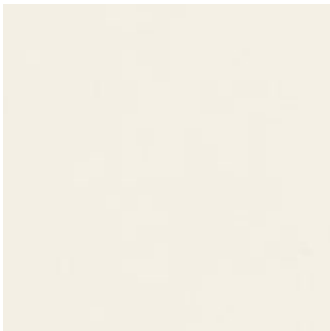


Key Design Features

- Knife edge detail
- Angled legs
- Glass center screen
- Mobile storage



Worksurfaces - Maple



Storage - Chalk



Trim - Graphite



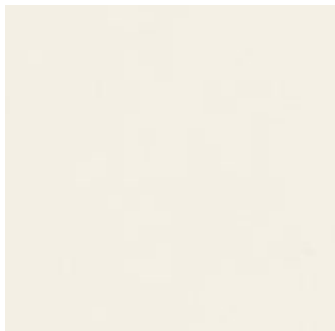
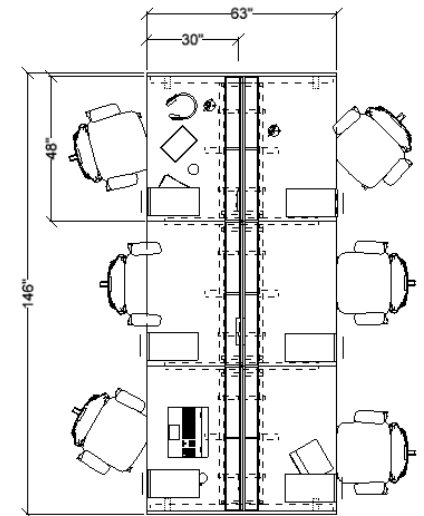
Seating - Hobson, Phoebe Reid

WORKSTATIONS | Benching - \$



Key Design Features

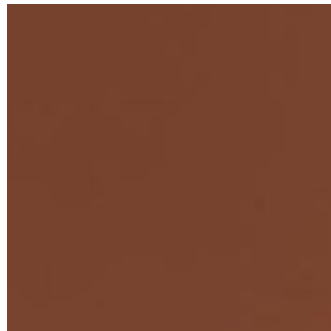
- Fabric center screen for seated privacy
- Gallery panel end panel
- Suspended box/open pedestal



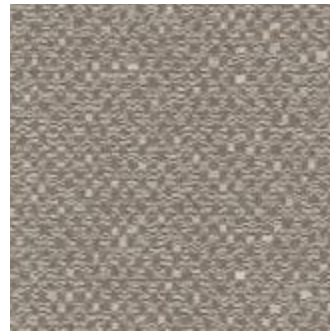
Worksurfaces - Chalk



Gallery Panel - Neo Walnut



Trim - Rusty Red



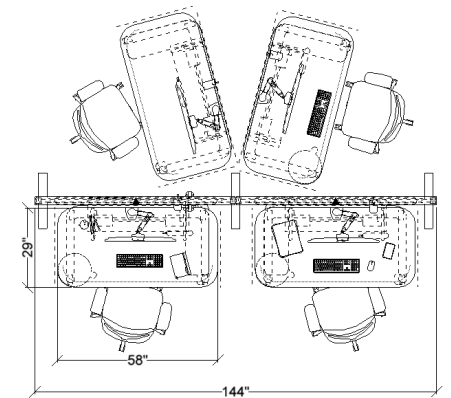
Center Screen - Tailored, Seam (RR)

WORKSTATIONS | Panel Based - \$\$



Key Design Features

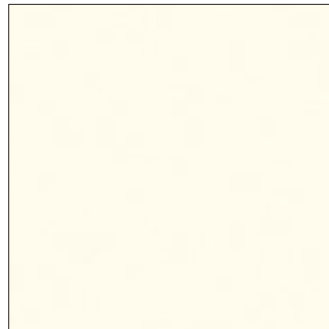
- Mobile height adjustable table
- Open storage on height adjustable table
- Panel mounted accessory frame with screen
- Belong power suite



Worksurfaces - Hay



Panel - Chevron, Fence (RR)



Trim - Smooth Plaster



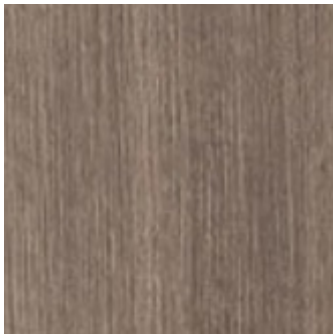
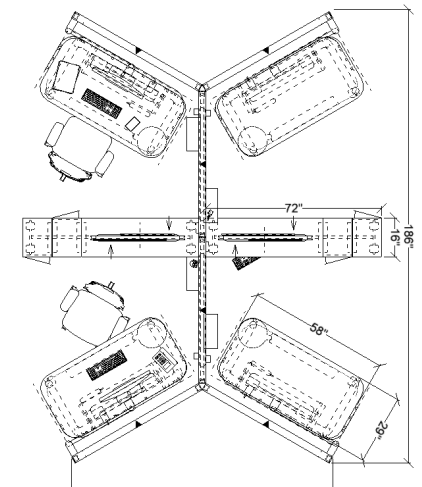
Accessory Frame with Screen - Blanket
Campfire (RR)

WORKSTATIONS | Panel Based - \$\$\$



Key Design Features

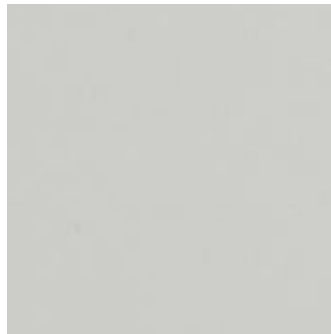
- Tethered mobile height adjustable table with footrest
- 120-degree panel configuration
- Panel mounted accessory frame with screen + accessory rail



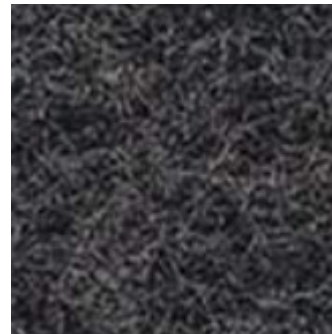
Worksurfaces - Pecan



Panel - Chevron, Fence



Trim - Putty



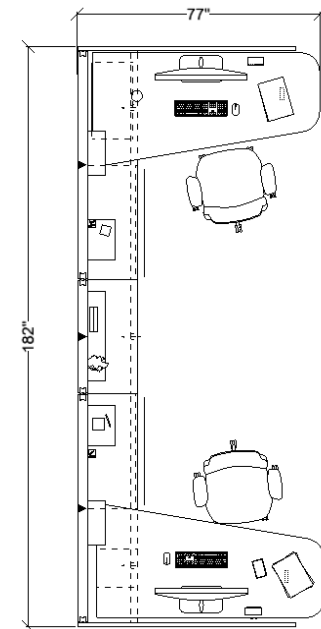
Echo Screen - Cotswold, Soft Charcoal

WORKSTATIONS | Panel Based - \$



Key Design Features

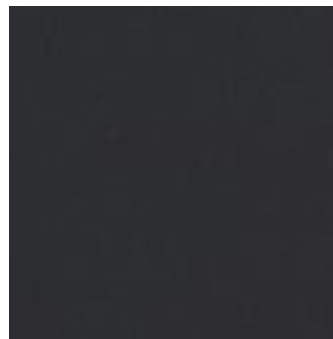
- Slotted accessory tile
- Laminate gallery panels
- Above worksurface systems panel power
- Open & closed 1-1/2 high storage



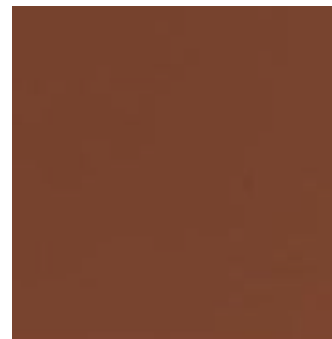
Worksurfaces - Hay



Panel - Camp, Cot (RR)



Gallery Panel - Charcoal



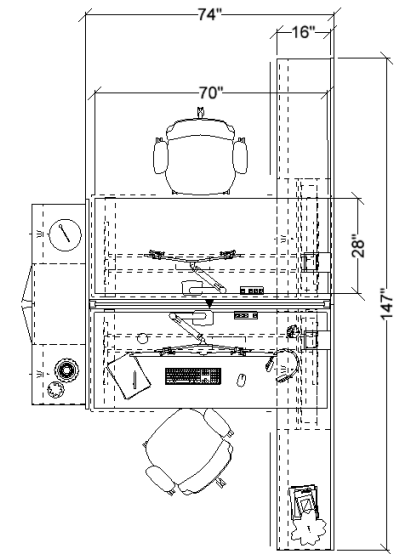
Slotted Tile - Rusty Red

WORKSTATIONS | Showroom - \$\$\$



Key Design Features

- Open credenza for height adjustable table leg integration
- Fabric center screen for seated privacy
- Laminate gallery panels
- Desk mounted power



Worksurfaces - Landmark



Panel - Highlands, Peat (RR)



Gallery Panel - Beige



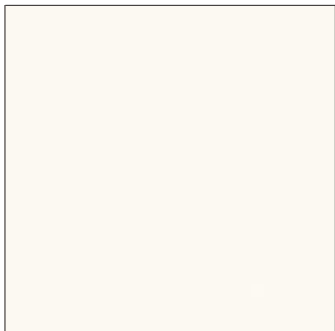
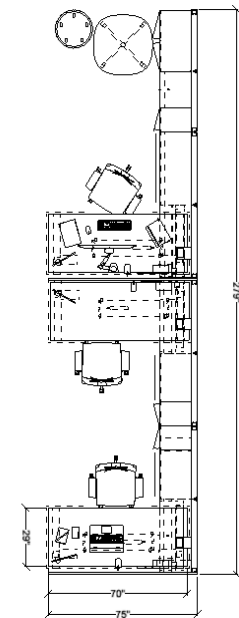
Seating Fabric - Squares, Madison

WORKSTATIONS | Panel Based - \$\$



Key Design Features

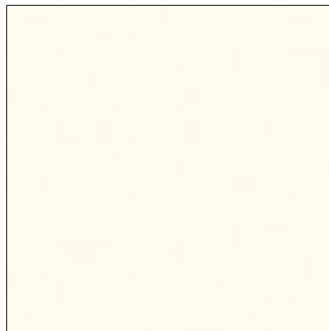
- Programmable paddle on height adjustable table
- Laminate gallery panels
- Variety of storage options
- Belong power suite + wire management



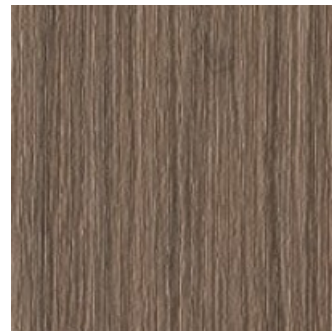
Worksurfaces - Linen



Panel - Camp, Pond (RR)



Trim - Smooth Plaster



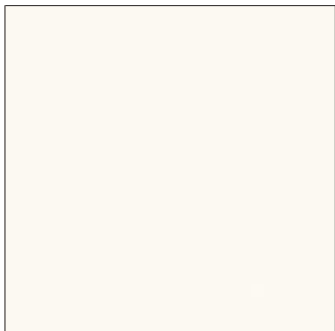
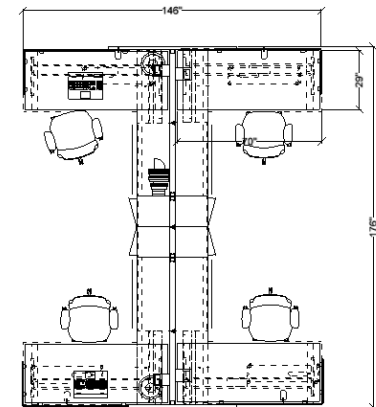
Storage Fronts - Drift

WORKSTATIONS | Panel Based - \$\$

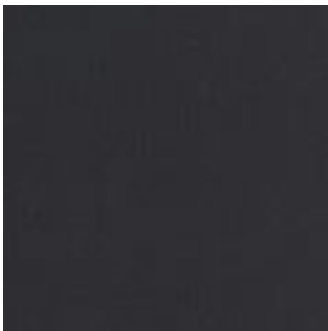


Key Design Features

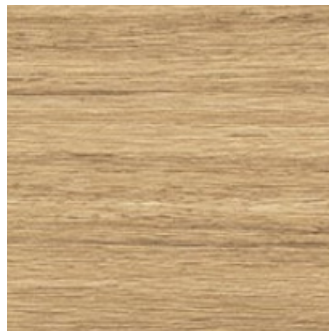
- Open credenza for height adjustable table leg integration
- Frameless frosted glass for privacy
- Table mounted corner privacy screen
- Wire management



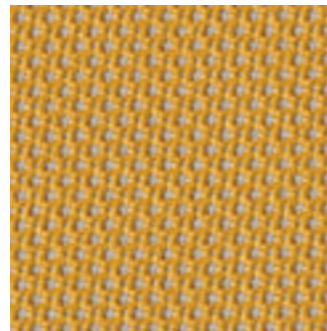
Worksurfaces - Linen



Panel - Charcoal



Gallery Panel - Landmark



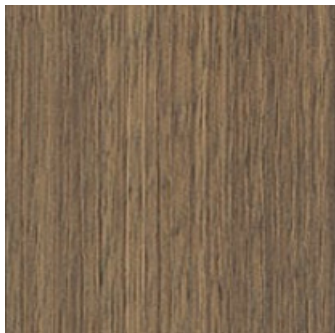
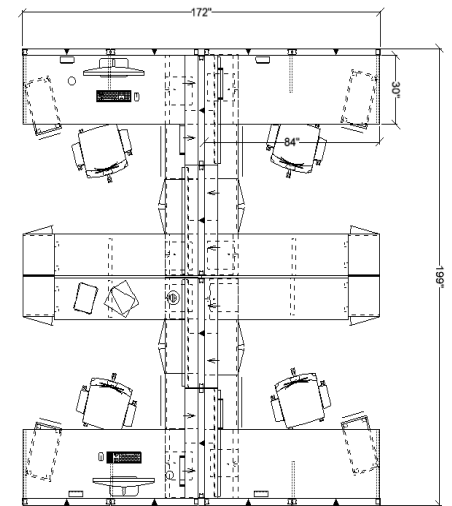
Seat Fabric - Morse, Blip

WORKSTATIONS | Panel Based - \$\$\$



Key Design Features

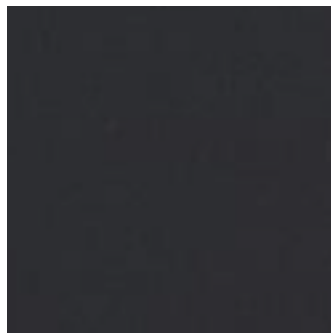
- Top mounted dual-sided overhead storage
- Slat tile
- Panel mounted worksurafces
- Mobile storage



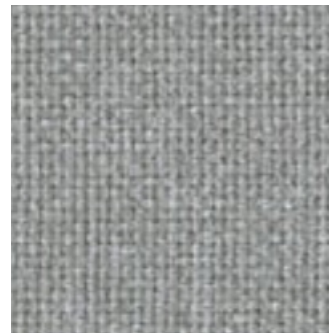
Worksurfaces - Neo Walnut



Panel - Chevron, Featherstitch (RR)



Trim - Charcoal



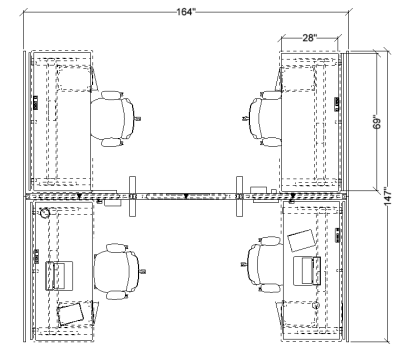
Seating Fabric - Blanket, Yawn

WORKSTATIONS | Panel Based - \$

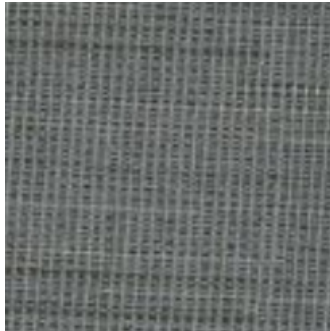


Key Design Features

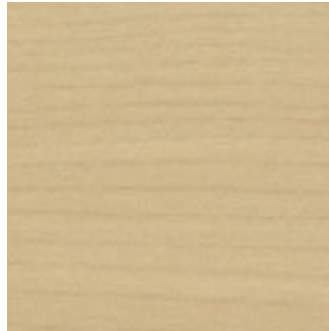
- Programmable paddle on height adjustable table
- Panel mounted accessory frame with removable markerboard
- Table mounted privacy screen
- Mobile storage



Worksurfaces - Maple



Panel - Striae, Beam (RR)



Gallery Panel - Maple



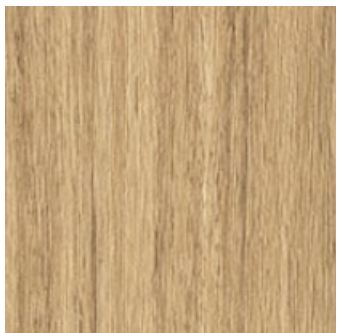
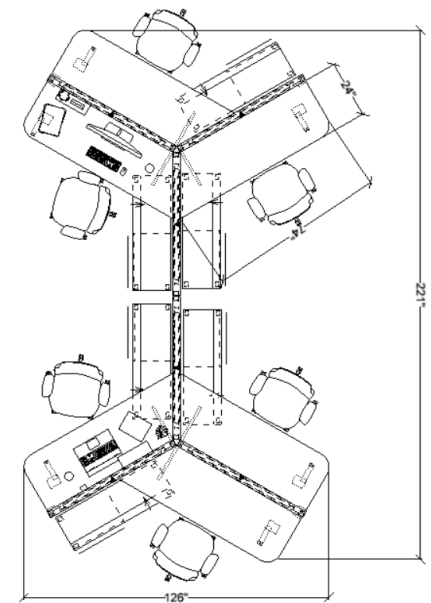
Echo Screen - Cotswold, Dartmouth (RR)

WORKSTATIONS | Panel Based - \$\$\$



Key Design Features

- Angled Legs
- Panel mounted accessory frame with removable markerboard
- Panel mounted accessory frame with screen
- Mobile credenza



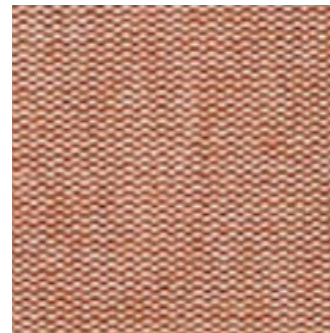
Worksurfaces - Landmark



Panel - Camp, Cot (RR)



Trim - Graphite



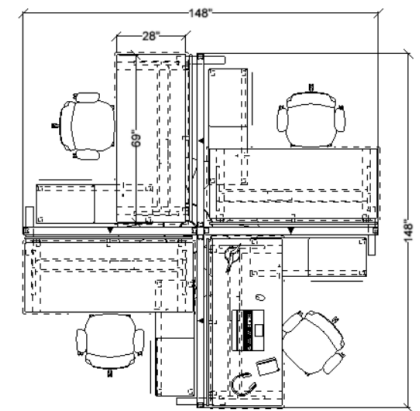
Echo Screen - Camp, Campfire

WORKSTATIONS | Panel Based - \$\$

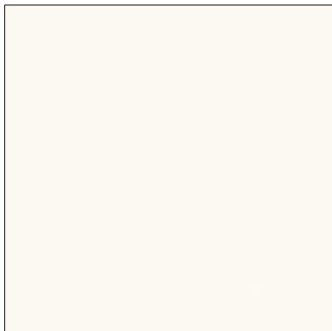


Key Design Features

- Height adjustable table
- Table mounted privacy screens
- Desk mounted power
- Mobile credenza



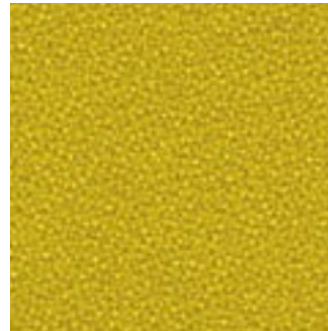
Worksurfaces - Landmark



Storage - Linen



Screen - Cotswold, Soft Charcoal



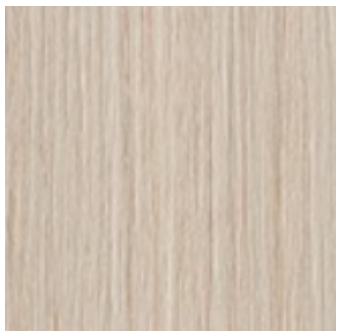
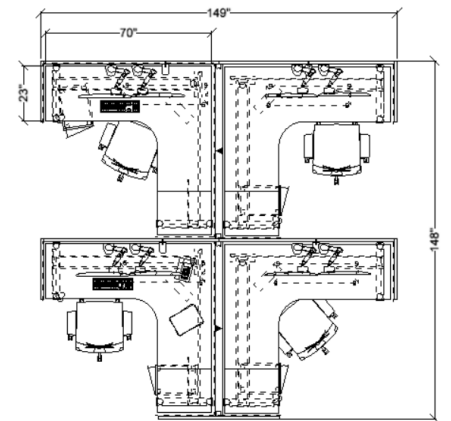
Cushion - Tellure, Sprout

WORKSTATIONS | Panel Based - \$\$

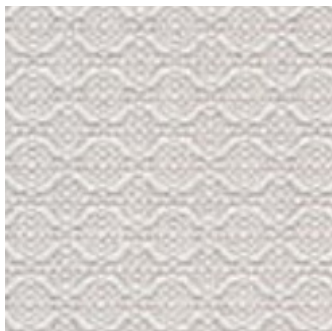


Key Design Features

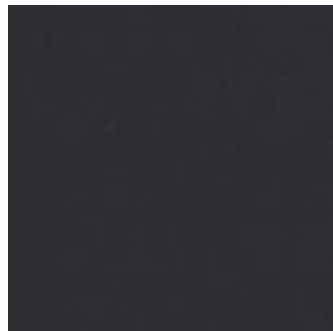
- 90-degree height adjustable table
- Frameless frosted glass for privacy
- Laminate gallery panel
- Mobile storage



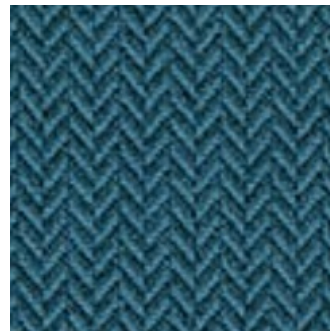
Worksurfaces - Hay



Panel - Peca, Bead (RR)



Gallery Panel - Charcoal



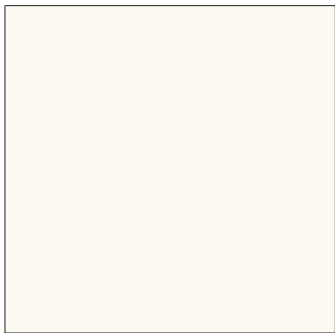
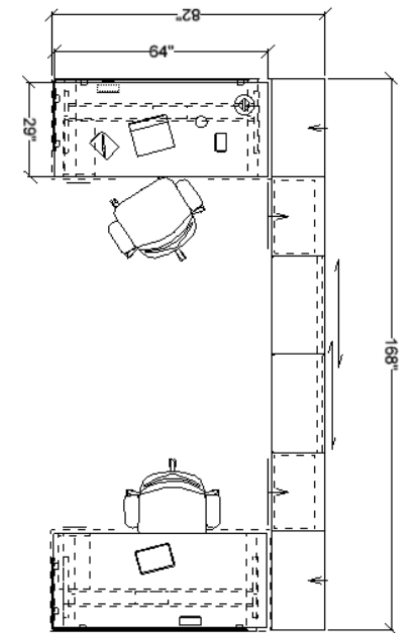
Seat Fabric - Hobson, Mg

WORKSTATIONS | Storage Based - \$

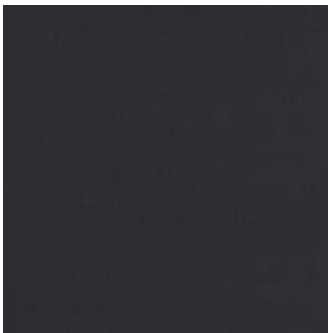


Key Design Features

- Programmable paddle on height adjustable table
- Suspended box/open pedestal
- Table mounted corner privacy screen
- Belong power suite + wire management



Worksurfaces - Linen



Trim - Charcoal



Storage - Drift



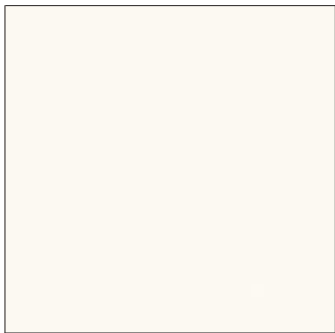
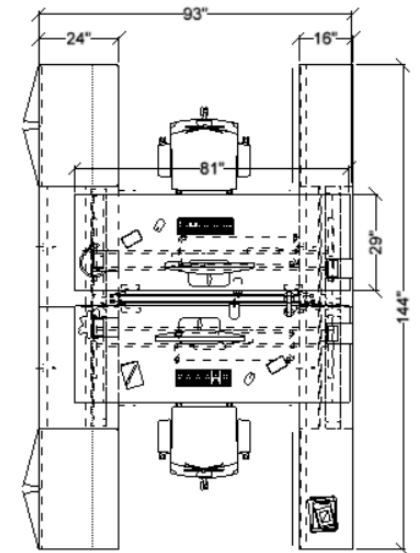
Screen - Oceanic

WORKSTATIONS | Storage Based - \$



Key Design Features

- Height adjustable table
- Open credenza for height adjustable table leg integration
- Table mounted privacy screens
- Belong power suite + wire management



Worksurfaces - Linen



Storage - Neo Walnut



Screen - Shimmer, Wet Grass



Cushion - Big Diagonale, Earth